

# 46<sup>th</sup> OMBERSLEY FLOWER AND PRODUCE SHOW

To be held in Ombersley Memorial Hall

SATURDAY 3rd AUGUST 2024

ORGANISED BY OMBERSLEY GARDENING CLUB

Entry is open to members and non-members alike.

A fee of 30p per entry is payable when exhibits are entered.

**No more than 2 entries per household in any class**

Exhibits must be brought to the Memorial Hall

Between 9.00 – 10.45 am

The Hall will be closed for judging at 10.45am sharp

Free public admission will be from 2.15 pm

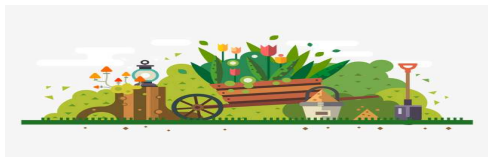
£1 cash prize for the entry judged first in all classes  
in Sections A B C D E G H

Please do not remove any exhibits until after the prize giving and  
raffle draw

Refreshments will be available

Prize giving at 4.15 pm

Raffle Draw after the prize giving



(Show Secretary – 07941 353193)

**SECTION A – FLOWERS – SECRETARY’S TROPHY**  
**Most number of points in the flower section**

Padding is allowed in order to show the flowers to their best advantage. Pot plants should be in the exhibitor’s possession for a minimum of 4 months prior to the show.

**Class**

- 1 Sweet peas - annual (5 stems)
- 2 Sweet peas – perennial (5 stems)
- 3 Dahlias – any one variety (3 stems)
- 4 Dahlias, any variety – can be mixed (max 5 stems)
- 5 Rose (1 stem)
- 6 Rose, floribunda (1 stem)
- 7 Lily (1 stem)
- 8 Hydrangea head (1)
- 9 Flowering plant, indoor or outdoor (in pot max 8"/20cms diameter) (not already classed)
- 10 Foliage plant, indoor or outdoor (in pot max 8"/20cms diameter)
- 11 Cactus or Succulent (in pot max 8"/20cms diameter)
- 12 Collection of different species of flowers in a single colour (5 stems)
- 13 Fuchsia (in pot 8"/20cms) (1 plant)
- 14 Fuchsia heads - displayed in any medium (max 6 heads)
- 15 Geranium/Pelargonium (in pot max 8"/20cms) (1 plant)
- 16 Geranium – cut bloom in vase/container (1 stem)
- 17 Begonia, flowering (in pot max 8"/20cms) (1 plant)
- 18 Gladiolus (1 stem)
- 19 Collection of different shrubs, flowering or non-flowering (3 stems)
- 20 Any other flowers not already classed (3 stems)
- 21 Pansy or Viola (leaves optional) (1 stem)

## **SECTION B – VEGETABLES – JACK BENTON SHIELD**

### **Most number of points in the vegetable section**

Exhibits in Section B to be shown on paper plates as appropriate

#### **Class**

- 22 Potatoes, white (3)
- 23 Potatoes, coloured (3)
- 24 Beetroot, leaves trimmed to 3" (3)
- 25 Carrots, leaves trimmed to 3" (3)
- 26 Shallots, tops tied (3)
- 27 Onions, **not skinned** (3)
- 28 Cabbage, with stalk, no roots (1)
- 29 Runner beans, with stalks (5 pods)
- 30 Longest runner bean (1)
- 31 French beans, dwarf, with stalks (5 pods)
- 32 French beans, climbing, with stalks (5 pods)
- 33 Lettuce, with stalk (1)
- 34 Cucumber (1)
- 35 Marrow (15"/38cm max length) (1)
- 36 Courgettes (6"/15cm max length) (3)
- 37 Any other vegetable (1)
- 38 Peas (max 5 pods)
- 39 Sweet peppers or chillies, one variety (3 fruits)
- 40 Parsley, fresh (6 stalks)
- 41 Six varieties of herbs in a container
- 42 A basket or trug of mixed vegetables
- 43 Tomatoes, with stalks (5)
- 44 Tomatoes, cherry type (1 truss not necessarily all ripe)

## **SECTION C – FRUIT – R GRIFFITHS TROPHY**

**Most number of points in the fruit section**

### **Exhibits in Section C to be shown on paper plates**

#### **Class**

- 45 Soft fruit of same variety, with stalks (5)
- 46 Plate of redcurrants/blackcurrants on stalks (5 stalks)
- 47 Plums, with stalks (5)
- 48 Any other variety of fruit not already classed
- 49 Collection of fruit, 3 varieties (max 9 fruits)

## **SECTION D – FLORAL ART – COMMITTEE TROPHY**

**Most number of points in the floral art section**

### **Flowers and foliage need not be home grown in Section D**

#### **Class**

- 50 Arrangement of 5 flowers only – any variety and colour and foliage
- 51 Arrangement for a celebration party – accessories allowed
- 52 Arrangement – In an unusual container
- 53 Arrangement with a water theme – accessories allowed

NB. No floral foam to be used unless it is biodegradable foam

## **SECTION E – PRESERVES & CAKES – W HESKETH TROPHY**

### **Most number of points in the preserves and cakes section**

#### **Class**

- 54 Jar of honey – homemade (own hives)
- 55 Jar of jam – stoned fruit
- 56 Jar of jam – soft fruit
- 57 Jar of marmalade
- 58 Jar of lemon curd
- 59 Jar of fruit jelly
- 60 Pickles, any variety
- 61 Chutney, any variety
- 62 Plate of chocolate cookies (4) - (own recipe)
- 63 Orange drizzle cake – (own recipe)
- 64 Tea bread, own recipe (any size)
- 65 Decorated fairy cakes – taste and decoration will be judged (4)
- 66 Victoria Sandwich (own recipe) to include raspberry jam and caster sugar
- 67 Treacle Tart (own recipe)
- 68 Cheese Scones (5)
- 69 Carrot Cake (own recipe)
- 70 Any home-made alcoholic drink, wine, cider, or beer excluding fruit spirits
- 72 Any home-made drink – non-alcoholic
- 73 Fruit spirits (eg fruit plus gin or vodka)

**NB As appropriate:**

**Number on jar, not lid.**

**Number on plate, not cling film**

## **SECTION F – FOR CHILDREN OF SCHOOL AGE**

### **TREASURER'S CUP**

#### **Most no. of points in the children's section**

NB To qualify every exhibit must carry entrant's age in years and months, no names

7 years and under

74 Paint a Pebble

8 years and over

76 Paint a Pebble

75 Arrangement of weeds in a welly

77 Arrangement of weeds in a welly

## **SECTION G—ARTS & CRAFTS – GARDENING CLUB TROPHY**

### **Most number of points in the Arts & Crafts section**

All handicrafts should have been painted or made within the last 5 years and not exhibited previously.

#### **Class**

- 78 A watercolour painting of a city scene
- 79 A homemade soft toy
- 80 A knitted or crocheted item, hand or machine
- 81 Edible jewellery
- 82 An item made from wood and/or metal components
- 83 Any type of needlework – own design
- 83a Any type of needlework using a kit or commercial pattern
- 84 A greetings card – own design

## **SECTION H – PHOTOGRAPHY – GARDENING CLUB SHIELD**

### **Most number of points in the photography section**

Coloured photograph, unframed, not exceeding 9" x 7" (23 x 18cm) including any mount, if used. To be taken by the exhibitor personally.

#### **Class**

- 85 Insects
- 86 Flight
- 87 Hedgerow
- 88 Water

## **HINTS AND TIPS**

1. Always stage vegetables, fruit, etc as naturally as possible, trimming any unnecessary leaf etc, but do not scrub or polish the surface.
2. Take care the final exhibit looks attractive, if necessary bedding items on sand, leaves, etc, to set them off.
3. The description 'Perennial' includes shrubs, bulbs, corms and tubers, ie a plant that lives for more than 2 years.
4. All exhibits must have their numbers clearly displayed.
5. Judges' decisions are final.
6. Only Stewards may move exhibits prior to and during judging.
7. All exhibits must be home-grown/home-made except for classes 50-53 inclusive.
8. Pot plants should be in the exhibitor's possession for a minimum of 4 months prior to the show.
9. No more than 2 entries in any one class may be entered per household.
10. All cookery items in classes 62-69 inclusive should be covered with cling film and on a paper or plastic plate.
11. The committee will not be held responsible for loss or damage to exhibits.

## SCHEDULE INFORMATION

1. Entries made later than 10.45 am will not be accepted. Entries must conform with the schedule to avoid disqualification.
2. Trophies and award cards. Points (3, 2 and 1 for 1<sup>st</sup>, 2<sup>nd</sup> and 3<sup>rd</sup>) will be awarded and totalled for the Trophies for each section and for the **Eliza M Bradley Challenge Bowl** for the most points in the entire show. The **David Ellis Cup** will be awarded for the second highest number of points in the show. The **Bernard R.G. Dadds Trophy** will be awarded for the best exhibit in Sections A, B and C. The **Arthur Billitt Shield** will be awarded for the most points in Section A and B. The **Ian Armstrong Cup** will be awarded for the best exhibit in the vegetable section. The **Barbara Allington Trophy** will be awarded for the best exhibit in Section D and the **Tredecingentenary Cup** for the best exhibit in Section G. The **Peter Stuart-Smith Trophy** will be awarded for the best exhibit in the Rose class. The **Norman May Trophy** will be awarded for the best exhibit in the Sweet Pea class. The **Barbara Pallister Trophy** will be awarded for the best exhibit in Section E. New for this year – the **Banksian Medal** will be awarded to the person with the most points in Sections A, B and C.
3. Trophies will be retained for one year and must be returned no later than the May meeting to the Show Secretary (07941 353193) who will also answer any queries.
4. The recipients of trophies will be held responsible for their safekeeping and engraving whilst in their possession.
5. All exhibits to be reclaimed after the Prizegiving at 4.15pm.
6. Prize money can be collected from the Treasurer.